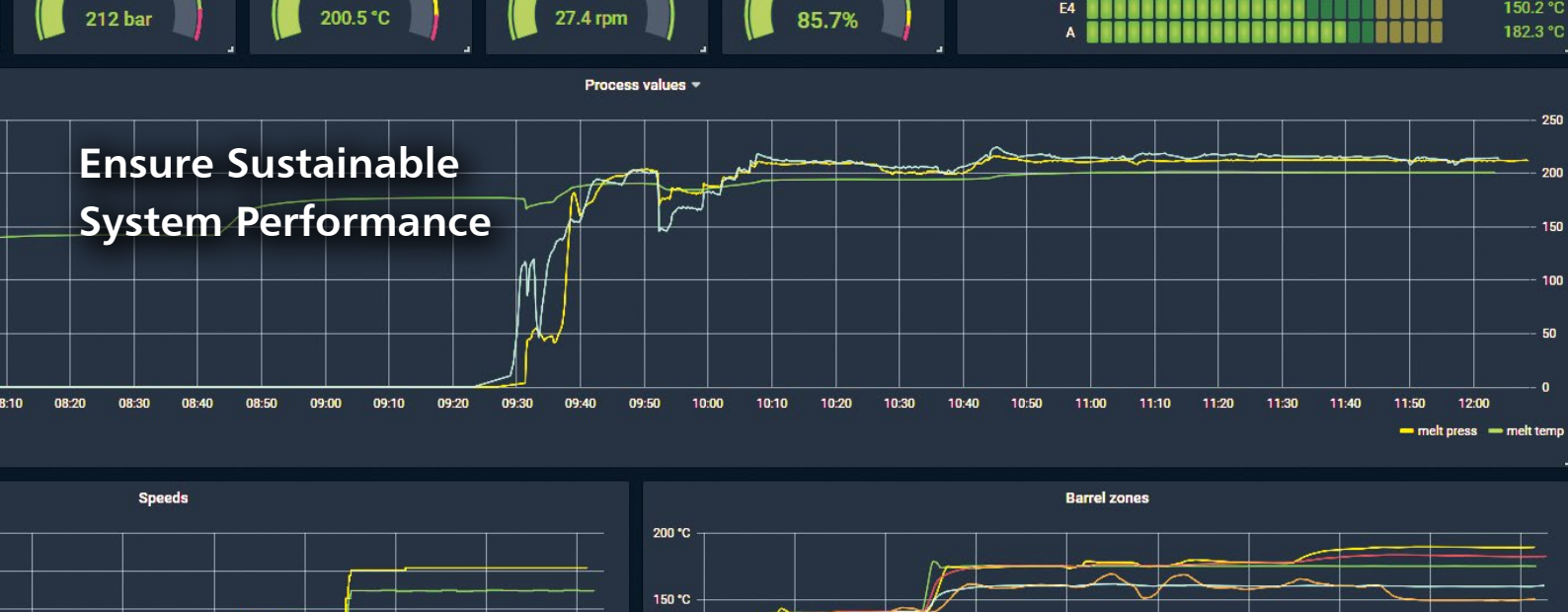


Control System Upgrade



Sustainable
Solutions
Worldwide.



Ensure Sustainable System Performance

When was the control system of your extrusion line last evaluated?

When was the last time you critically assessed the condition of your control system? Many industrial operations continue to rely on equipment that was once cutting-edge — but today’s demands have evolved dramatically. The question is no longer how well your system performs today, but whether it can sustain the level of performance your business will require tomorrow. How much longer can your control system be relied upon?

Control systems are the backbone of your production. Yet all too often, they are taken for granted — until failure strikes. It is essential to ask: can your current system keep pace with tightening requirements, digital transformation, and rising demands for efficiency? Now is the time for a rigorous evaluation to protect the long-term stability and competitiveness of your operations.

How much longer will your current control system last?

- Do you believe your control system is still operating efficiently?
- Is your system design still consistent and standardized across your operations?
- Do you feel your hardware is ready for future demands?
- Can your system handle distributed, multi-terminal control?
- Is your control system equipped for Industry 4.0 and digital integration?
- Can you currently perform remote maintenance and software upgrades?
- Are you able to integrate web-controllable devices easily?
- Is your system prepared for proactive maintenance and condition monitoring?

From Past Limitations to Future Capabilities



B&R series 2005 or 2003

BMCplus



B&R series 2003

15"
BMCtouch



B&R series X20

17" / 19"
BMCtouch

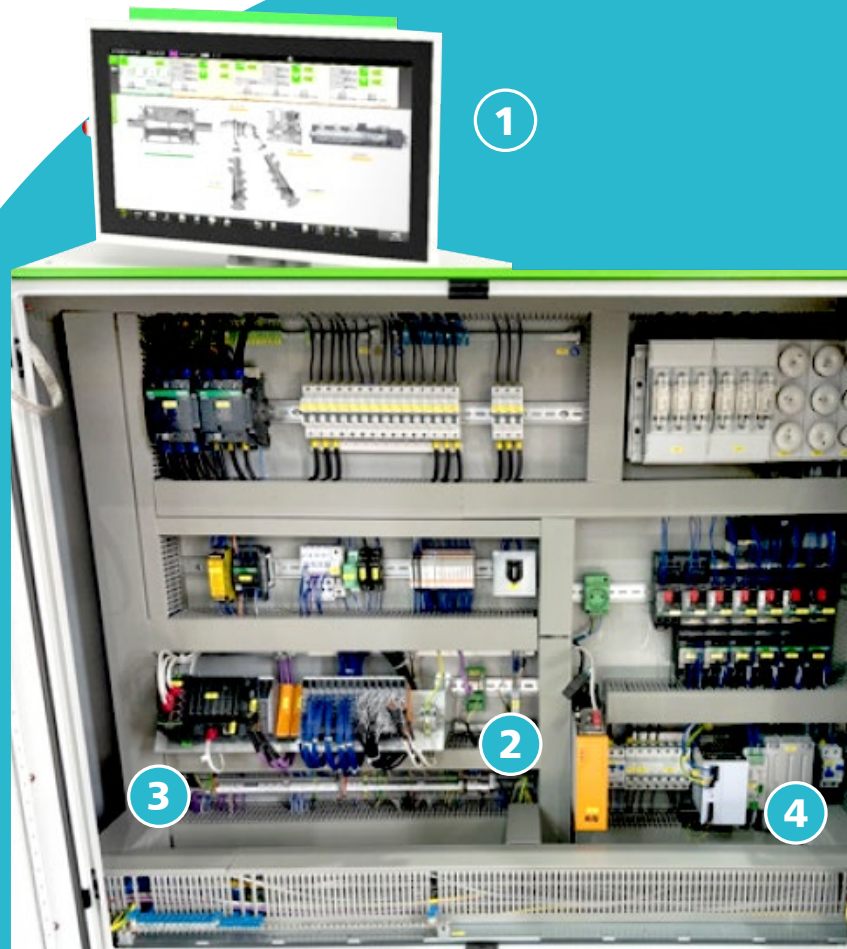
BCtouch UX

Main components:

- 1 Full HD Touch display 21,5"
- 2 Industrial-PC for the visualization
- 3 Control system B&R X20 incl. X20CP3684 CPU
- 4 Switching power supply 24VDC incl. UPS

Upon request:

- Upgrade BMCsmart
BCtouch UXcompact or BCtouch UX
- Upgrade BMCeco
BCtouch UXcompact or BCtouch UX
- Upgrade 15" BMCtouch
with X20 PLC + CPU X20CP3484
or X20CP3584



Sustainable Solutions Worldwide.

Contact Us

We're here to support your transition to BCtouch UX — from planning to installation and beyond.

Whether you need a detailed upgrade consultation, a tailored solution package, or expert technical advice, our team is ready to assist you every step of the way.

Reach out to us for

- Personalized upgrade consultations
- Detailed proposals and system evaluations
- Technical support and compatibility checks
- Scheduling and installation planning
- Post-upgrade training and service

Technical Support

service.germany@battenfeld-cincinnati.com
+ 49 5731 242-321

Spare Parts

spares.germany@battenfeld-cincinnati.com
+ 49 5731 242-311

Service portal

Scan to login

