

# Complete lines for technical and window profiles

Application: Profiles

**Sustainable  
Solutions  
Worldwide.**

battenfeld-cincinnati 

## **Process engineering for efficient plastics extrusion of tomorrow – From the raw material to the finished product**

Based on our modular line concept, we are able to implement cost-optimized and customer-specific solutions. This goes beyond the product specification to the processing of the materials, the infrastructure specified in the general conditions up to the appearance of the plant and the control interface. Our company takes all of these conditions into account when designing your extrusion line. We combine our own products with components from long term partners in order to supply our customers the ideal solution from a single source.

### **battenfeld-cincinnati extrusion lines – One-stop solutions**

- |  |   |   |  |
|--|---|---|--|
| <b>1</b>   | <b>2</b>  | <b>3</b>  | <b>4</b>   |
| <ul style="list-style-type: none"><li>• Customer expectation</li><li>• Plant specification</li><li>• Specifications</li><li>• Resource check</li></ul> | <ul style="list-style-type: none"><li>• Technical clarification</li><li>• Specification sheet</li><li>• Production of machines</li><li>• Selection of suppliers</li><li>• Supplier coordination</li></ul> | <ul style="list-style-type: none"><li>• Manufacturing</li><li>• In-house testing</li><li>• Pre-commissioning</li><li>• FAT on request</li></ul> | <ul style="list-style-type: none"><li>• Line commissioning</li><li>• Line handover</li><li>• Process consulting</li><li>• Staff training</li><li>• After Sales Service</li></ul> |

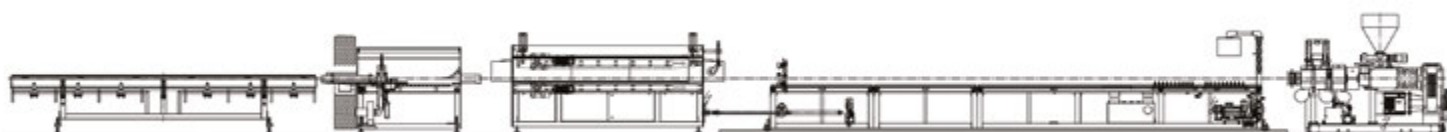
### **Conservation of resources while maintaining profitability – Sustainability all along the line**

Our solutions offer a resource-saving and economical production of your products and our worldwide service network ensures the constant process availability. We focus on highest product quality with high output rates, functionality, machine availability as well as energy saving.

# Complete lines for profile extrusion – from the raw material to the finished product

battenfeld-cincinnati stands for state-of-the-art machine manufacturing and innovative technologies. We plan, design and install profile extrusion lines with perfectly matched components that feature high output, energy-efficient production and excellent end product quality.

## Schematic overview of a standard profile extrusion line



**Tip table**  
dropStream

**Cutting unit**  
cutStream

**Haul-off**  
pullStream

**Calibrating table**  
calStream

**Tooling**

**Extruder**

- Single screw extruder
- Twin screw extruder
- Co-extruder

## Extruder Series

In window profile extrusion, mainly PVC is used, which is processed on twin screw extruders. PVC profiles are characterized by low weight, excellent strength and form stability. For technical profiles, materials such as PO and PS, thermoplastic elastomers, polyamides and granulates with fillers are processed on single screw extruders in addition to PVC pellets.

## Co-Extruder

Material costs can be significantly reduced by using recycled materials in co-extrusion. A combination of high-grade PVC production waste or recycled materials (old windows) with virgin PVC is possible. Depending on the requirements, the co-extruder can be mounted directly above the main machine (piggyback) or positioned on the floor at an angle.



twinEX 93-34



twinEX 93-34 +  
conEX NG 54 coex

profile	kg/h	kW	rpm
<b>twinEX 72-28</b>	115 - 250	36	23
<b>twinEX 93-28</b>	160 - 350	50	26
<b>twinEX 114-28</b>	280 - 560	75	20
<b>twinEX 78-34</b>	125 - 290	45	32
<b>twinEX 93-34</b>	180 - 420	61	26
<b>twinEX 114-34</b>	270 - 600	85	20

profile	kg/h	kW	rpm
<b>conEX NG 42</b>	35 - 110	16	39
<b>conEX NG 54</b>	55 - 175	26	32.5
<b>conEX NG 65</b>	90 - 250	36	28
<b>conEX NG 72</b>	110 - 280	40	24

The given output numbers depend on formulation, sheet thickness, density and processing condition.

## Complete lines for profile extrusion – Solutions for window and technical profiles

### Window and door profiles

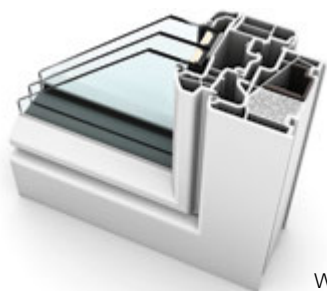
Windows and doors made from PVC offer an excellent price/performance ratio, are easy to install, resistant to weathering and chemicals and have excellent heat and sound insulation properties. The market segment includes the following applications:

- Window and door profiles
- Blinds and roller blind boxes
- Extruded window sills

### Technical profiles

Thanks to their manifold attributes, small profiles can be found in a great variety of applications:

- Decorative profiles and edge bands for furniture
- Cable conduits and light strips
- Cover strips and baseboards for building and electrical industry
- Electronic components
- Scanner strips for retail stores
- Sealing profiles made of thermoplastic elastomers
- Protective profiles
- Balcony panels and gutters



Window profile  
Internorm®



Co-extruded protective  
profile photo MPM®

Profile for  
window blinds

## battenfeld-cincinnati Services –

### Worldwide active for you

We have an extensive service network at our disposal to support our customers professionally and promptly with technical know-how and spare parts. Our locally available service technicians are regularly trained on the current state of the art and informed about new developments.

#### Wear Analysis

- Regular wear measurement
- Wear protection consulting

#### Spare Parts

- Tailor-made spare parts packages
- Innovative screw design

#### Extruserve

- Completely overhauled extruders
- Screws repair for many external extruders
- Screws & barrels for other brands

#### Repairs & Upgrades

- Control retrofits
- New drives for extruders & successions
- Repairs of screws, gears, controls & drives

#### Technical Service

- Commissioning, maintenance, inspection
- Repair-in-the-field-Hotline
- Remote diagnosis system

#### Support & Training

- Consulting & training
- Inspection & service contracts
- Energy-saving advice
- Forecasting required key parts
- Material analyses & pilot plant



## battenfeld-cincinnati Group

#### BC Extrusion Holding GmbH

Grüner Weg 9  
32547 Bad Oeynhausen

#### battenfeld-cincinnati Germany GmbH

Grüner Weg 9  
32547 Bad Oeynhausen  
P +49 (5731) 242-0  
F +49 (5731) 27124  
germany@battenfeld-cincinnati.com  
www.battenfeld-cincinnati.com

#### battenfeld-cincinnati USA

823 S. By-Pass, P.O. Box 832  
McPherson, KS 67460, USA  
P +1 (620) 241-6843  
F +1 (620) 241-0207  
usa@battenfeld-cincinnati.com  
www.battenfeld-cincinnati.com/usa

#### battenfeld-cincinnati Austria GmbH

Laxenburger Str. 246  
1230 Wien  
P +43 (1) 61006-0  
F +43 (1) 61006-8  
austria@battenfeld-cincinnati.com  
www.battenfeld-cincinnati.com

#### battenfeld-cincinnati (Foshan) Extrusion Systems Ltd.

2 Jinxiang Road, Daliang, Shunde  
Foshan, Guangdong  
P +86 (757) 2238 0110  
F +86 (757) 2221 1801 / 2238 0195  
china@battenfeld-cincinnati.com  
www.battenfeld-cincinnati.com/china