

PRESS INFORMATION

“Next Generation” extrusion equipment showcased in Iran

battenfeld-cincinnati will exhibit leading European extrusion technology for pipe, profile and thermoforming sheet extrusion at Iranplast 2017. Cost savings and high flexibility are the basis of battenfeld-cincinnati’s latest equipment innovations, which will be presented at the booth of its agent Varzidehkar (Deka International) in hall 38 / B70.

“For battenfeld-cincinnati, Iran has long been an important market and we have many long-standing customers here. We are looking forward to introducing the new equipment we premiered at K show last year to the Iranian market. We have two new extruder series for pipe and profile extrusion, which are equipped with our new control system that is ideally suited for Industry 4.0. We will also present the newest developments for thermoforming sheet extrusion. The main features of our equipment are lower energy and material consumption and increased flexibility and performance,” says Gerold Schley, CEO of battenfeld-cincinnati.

Cost and energy savings with high-performance, “Next Generation” (NG) single screw extruders

The solEX NG comes in four extruder sizes (60, 75, 90, 120 mm) and offers up to 25% higher outputs per machine size (from 1,000 to 2,500 kg/h for HDPE). The new, groundbreaking processing unit has a completely redesigned barrel, screw, and grooved bushing. Thanks to this, up to 10 °C lower melt temperatures, an optimized, constant pressure build-up, reduced maintenance costs and up to 15% lower energy costs are possible. Thanks to their high outputs and excellent melt processing capacities, solEX NG extruders are ideally suited for large diameter pipe extrusion. This was the reason that Jain Irrigation Systems Ltd, India, chose a solEX NG for their new 2.5 m HDPE pipe extrusion line.

More flexibility in PVC processing with “Next Generation” (NG) twin screw extruders

The conical twin screw extruder series conEX NG is available in three sizes (42, 54 and 65 mm). With outputs from 20 to 250 kg/h for PVC profile and WPC/NFC and from 60 to 450 kg/h for PVC pipe, it offers maximum productivity. The machines feature a longer pre-heating zone and an optimized screw design. The new geometry concept minimizes wear and allows for a great variety of material blends to be processed with the same screw. The machine can be operated under a permanent process pressure of up to 520 bar. The fully insulated barrel offers energy savings of up to 10% and balanced processing ensures that energy savings of up to 20% can be realized.

Thanks to its low energy consumption and reduced footprint, the conEX NG is also an excellent choice for co-extrusion. It is available

Press contact

battenfeld-cincinnati

Ms Judith Lebic

Telephone: +43 (1) 610 06-293

E-Mail: lebic.j@battenfeld-cincinnati.com

in several different space-saver or pedestal designs and can be optimally adapted to every main extruder, thanks to improved height and tilt adjustment facilities.

New control system for Industry 4.0

battenfeld-cincinnati's new BCtouch UX control system features an operating concept modeled on modern communication media with an intuitive menu navigation. With its advanced functions, it supports efficient production planning and preventive maintenance, and fulfills future requirements for connectivity with servers and mobile appliances. In this way, it also provides the prerequisites for comprehensive process data acquisition and evaluation, and for vertical integration according to the Industry 4.0 concept.

State-of-the-art high-speed extrusion lines and innovative roll stack technology

battenfeld-cincinnati's powerful high-speed extruders and its unique roll stacks are optimal equipment solutions for the growing packaging market.

The high-speed extruder series comes in two machine sizes (45 and 75 mm) that enable energy savings of 15-20%, as well as improved quality thanks to a reduction of residence time. The extruders are easy to handle and have less space requirements, while still offering extremely high outputs (30-1,500 kg/h for PP, 35-1,750 kg/h for PS, 30-1,200 kg/h for pre-dried PET).

The Multi-Touch roll stack is also suited for high-performance extrusion. It has an innovative multi-nip process that achieves stress-free sheet with thickness tolerances of +/- 1% even at high line speeds, as well as high transparency and surface gloss. The Multi-Touch XXL version delivers an enormous output of up to 3,300 kg/h (PET) and up to 2,700 kg/h (PP), depending on the width and thickness of the sheet.

Greater flexibility and cost savings with inline pipe dimension change

battenfeld-cincinnati's FDC (fast dimension change) system allows for a change of external diameters and pipe wall thicknesses during production, as well as fast color changes. Dimension changes work fully automatically at the push of a button across a wide range of diameters. Thanks to shorter changeover standstill times, production flexibility is increased and substantial material savings can be realized. At the plant of battenfeld-cincinnati's customer Emtelle in Denmark, changeover to different pipe dimensions takes only 20 minutes, while the change to a different automatic range – e.g. from 200 – 355 mm to 400 – 630 mm – can be made within one shift.

Find out more – visit us in hall 38, booth B70 and check out our videos on youtube!

About battenfeld-cincinnati:

battenfeld-cincinnati is a leading producer of energy-efficient, high-performance extruders and complete extrusion lines according to

customers' specific requirements. It offers a variety of equipment for many different applications in the areas of pipe, profile, sheet, thermoforming sheet and pelletizing. Customers are supported by production facilities in Germany, Austria, China and the USA, as well as an extensive worldwide sales and service network.

Web: www.battenfeld-cincinnati.com/en
Youtube: www.youtube.com/BattenfeldCincinnati

Photos:



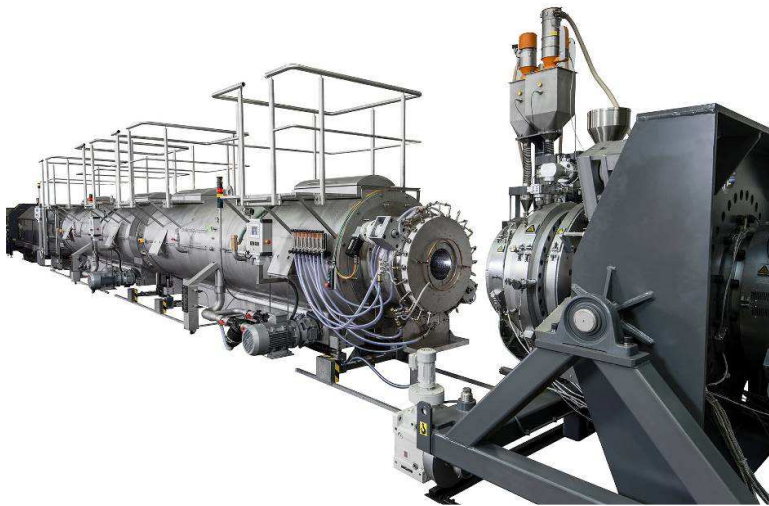
The new single screw series solEX NG with a completely redesigned processing unit for lower melt temperatures, higher outputs and energy cost savings. The machine is equipped with the new BCtouch UX control for Industry 4.0 applications.



The new conEX NG twin screw series has been completely redesigned and features higher outputs and a new geometry concept for more flexibility in processing diverse formulations. The machine is equipped with the new BCtouch UX control for Industry 4.0 applications.



The Multi-Touch roll stack in XXL version – this model achieves outputs of up to 3,300 kg/h (PET)



With the FDC line, changeover to different pipe dimensions currently takes about 20 min at Emtelle's plant, and the change to a different automatic dimension range is possible within one shift

5718 characters
1018 words

Ref.: Messe_201702_Iranplast_DE
Photos: Messe_201702_Iranplast 1-4
Date: 18.8.2017